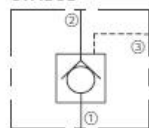


DIRECTIONAL VALVE

ICKBB CHECK VALVE PILOT-TO-OPEN



SYMBOL



DESCRIPTION

A screw-in, cartridge-style, hydraulic check valve for use as a blocking or load-holding device.

OPERATION

The ICKBB allows flow from ② to ①, while normally blocking oil flow in the opposite direction. The flow will be allowed from ① to ② when sufficient pressure is applied at ③.

The check is spring-biased to assure holding in static or no-load conditions.

FEATURES

1. Hardened seat for long life and low leakage.
2. Optional sealed piston.
3. Optional spring ranges.
4. Compact size.

RATINGS

Operating Pressure: 350 bar (5100 psi)

Flow: See Performance Chart

Internal Leakage: ① to ② : 0.10 ml/min. max (1 drops/minute) at 207 bar (3000 psi)

Pilot Ratio: 3:1

Check Spring Bias: 2 bar (29psi) Standard

With Sealed Piston Option: 6.2 bar (90 psi) minimum

Temperature: -40 to 120°C

Fluids: Mineral-based or synthetics with lubricating properties at viscosities of 7.4 to 420 cSt (50 to 2000 ssu)

Installation: No restrictions

Cavity: IT-163A; See page 310

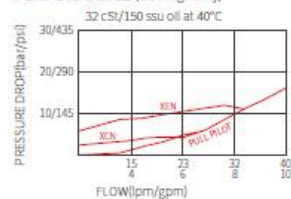
MATERIAL

Cartridge: Weight: 0.10kg. (0.22 lbs.); Steel with hardened work surfaces.

Zinc-plated exposed surfaces.

Seal: O-rings and back-up rings.

PERFORMANCE (Cartridge Only)



Mail: salesinno@innohydra.com

<https://www.inno-valve.com/>