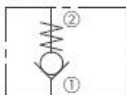


DIRECTIONAL VALVE

ICV42-M20 POPPET, CHECK VALVE



SYMBOL



DESCRIPTION

A screw-in, cartridge-style, hydraulic check valve for use as a blocking or load-holding device.

OPERATION

The ICV42-M20 allows flow passage from ① to ②, while normally blocking oil flow in the opposite direction. The cartridge has a fully guided check which is spring-biased closed until sufficient pressure is applied at ① to open ②.

FEATURES

1. Hardened seat for long life and low leakage.
2. Optional bias springs for back-pressure application flexibility.
3. Conforms to ISO 7789 cavity.

RATINGS

Operating Pressure: 240 bar (3500 psi)

Proof Pressure: 350 bar (5100 psi)

Flow: See Performance Chart

Internal Leakage: 0.25 ml/min. (5 drops/minute) max. at 240 bar (3500 psi)

Crack Pressure Defined: Gauge bar (psi) evident at ① at 16.4 ml/min. (1 cu. in./minute) attained

Standard Bias Springs at Crack: 0.34 bar (5 psi); 1 bar (15 psi); 1.7 bar (25 psi); 2.1 bar (30 psi); 4.1 bar (60 psi); 6.9 bar (100 psi)

Temperature: -40 to 120°C

Fluids: Mineral-based or synthetics with lubricating properties at viscosities of 7.4 to 420 cSt (50 to 2000 ssu)

Installation: No restrictions

Cavity: IVC42-2M; See page 306

MATERIAL

Cartridge: Weight: 0.43kg. (0.95 lbs.); Steel with hardened work surfaces.

Zinc-plated exposed surfaces.

Seal: O-rings and back-up rings.

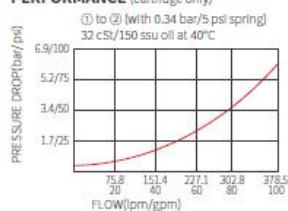
Standard Ported Body: Weight: 1.63 kg. (3.60 lbs.); Anodized highstrength 6061

T6 aluminum alloy, rated to 240 bar (3500 psi).

Ductile iron and steel bodies available; dimensions may differ.

Consult Inno.

PERFORMANCE (cartridge only)



Mail: salesinno@innohydra.com

<https://www.inno-valve.com/>